



Scan to visit
our website



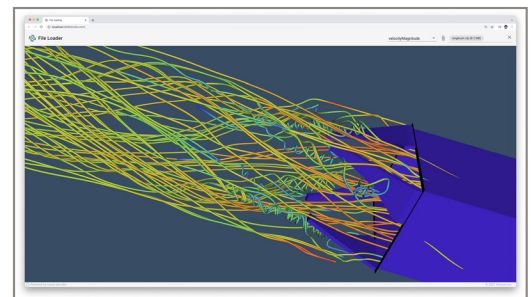
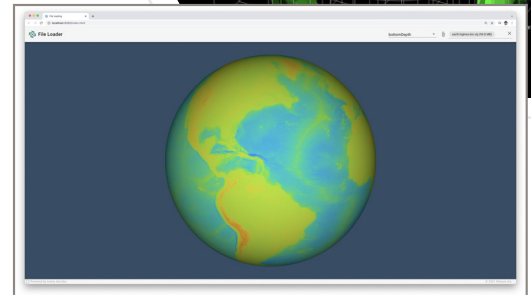
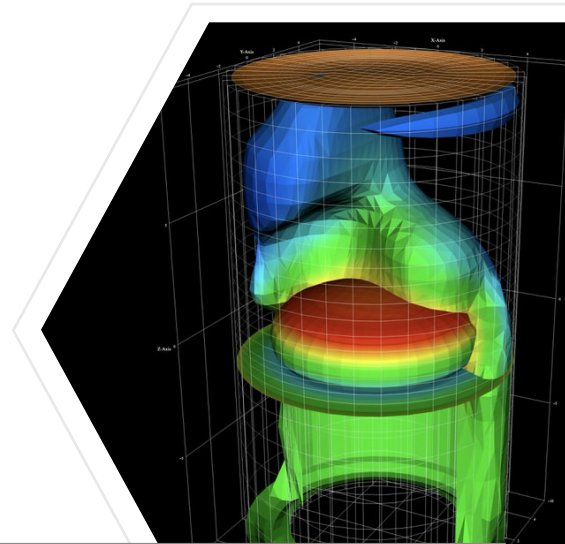
A New Web Framework for Visual Analytics

Simple, powerful, innovative

trame provides a simple, easy-to-use framework for creating visual analytics applications for Web, desktop, and Jupyter. With best-in-class VTK and ParaView platforms at its core, trame provides complete control of 3D visualizations and data processing.

trame includes important features, such as:

- Letting you focus on your data analysis and visualizations without the complications of application development (Python)
- Leveraging existing libraries and tools (e.g. Vuetify, Altair, Vega, deck.gl, etc.) to create compelling content for visual analytics applications
- Seamlessly exposing both local and remote rendering
- Write-once runs in all applications (i.e. remote cloud or desktop application, or a Jupyter tool)
- All of its components are reusable
- Cost-effective, yet cutting-edge thanks to being open source
- Well-supported by a strong user community and Kitware



Professional Support for trame

Kitware offers professional support services for all of our open source platforms. Whether you're interested in technical support or training, or are looking to customize the platform to meet your specific project requirements, you can partner with Kitware.

To learn more about Kitware's professional support services, message us at kitware@kitware.com.



kitware

Address: 1712 Route 9, Suite 300, Clifton Park, NY 12065
Phone: (518) 371-3971

Email: kitware@kitware.com
Website: kitware.com